

B-Line

B-Line S.r.l.
Via Galileo Galilei, 13/B
35030 - Sarmeola di Rubano (PD)
ITALY

T. +39 049 8978245
F. +39 049 633499
E. info@b-line.it
W. b-line.it

BIX

Design by Zanellato / Bortotto

CARTELLA TESSUTI / FABRIC REFERENCE CHART

FP

PLATINUM
FLUKSO



TFP12



TFP22



TFP23



TFP27



TFP30



TFP35



TFP44

VG

GORGEOUS
FLUKSO



TVG2111



TVG2114



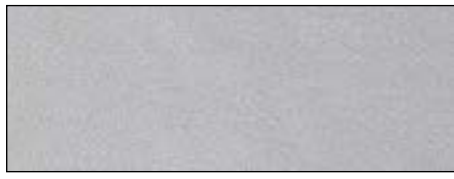
TVG2127



TVG2131



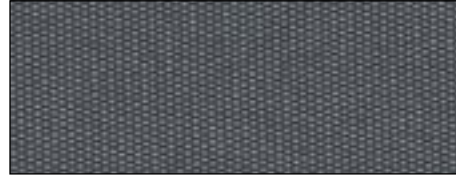
TVG2148



TVG2153

PT

PATIO
KVADRAT



TPT170



TPT210



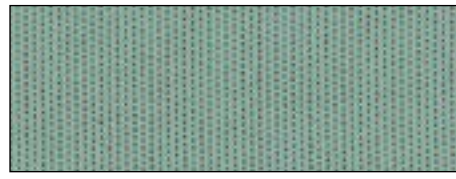
TPT450



TPT570



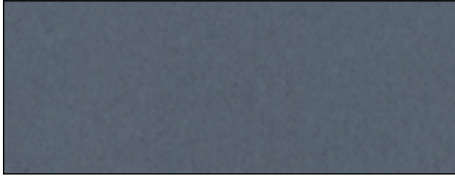
TPT750



TPT840

HE

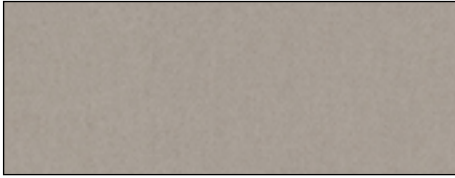
HERO 2
KVADRAT



THE152



THE162



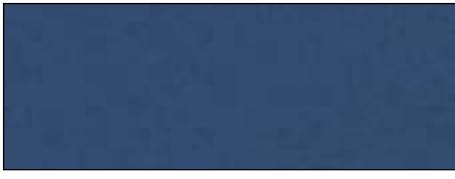
THE212



THE542



THE582



THE752



THE882

ST

STEELCUT TRIO 3
KVADRAT



TST213



TST453



TST576



TST796



TST806



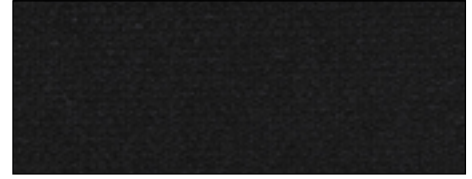
TST976



TST983

SC

STEELCUT 3
KVADRAT



TSC190



TSC240



TSC522



TSC605



TSC682



TSC780



TSC922

LN

PANAMA
DANI



LN5080



LN5300



LN5310



LN5428



LN5460



LN5506

**SPECIFICHE TESSUTI
/ FABRIC FEATURES**

**FP
PLATINUM FLUKSO**

82% PVC
18% PES



650 g/mq/ g/sqm
100.000 Martindale

**VG
GORGEOUS FLUKSO**

100% PES FR - Trevira CS



450 g/mq/ g/sqm
100.000 Martindale

**PT
PATIO KVADRAT**

100% Trevira CS



560 g/mt/ g/lin.m
50.000 Martindale

Resistenza alla luce 7/ Lightfastness 7
EN ISO 105 B04
EN ISO 105 B02

**HE
HERO 2 KVADRAT**

97% Lana vergine/ Pure wool
3% Nylon



580 g/mt/ g/lin.m
45.000 Martindale

**ST
STEELCUT TRIO 3 KVADRAT**

90% Lana vergine/ Pure wool
10% Nylon



770 g/mt/ g/lin.m
100.000 Martindale

**SC
STEELCUT 3 KVADRAT**

90% Lana vergine/ Pure wool
10% Nylon



825 g/mt/ g/lin.m
100.000 Martindale

**LN
PANAMA DAN I**

100% Pelli bovine europee/
European cow hides

sp/ thk
1,0-1,2 mm

Resistenza allo strappo/
Tear resistance
20 NI EN ISO 3377 -1

Resistenza alla flessione/
Flex resistance

Nessuna rottura in 50.000 cicli/
No damage in 50.000 cycles
EN ISO 5402 -1